

# Combination Drafts

“Surely no one has ever seen anything like these,” I thought when I found these two fragments.

**P6, P7** ■ Each piece has two separate structures combined on one coverlet. I was very excited. To my amazement, I later found drafts for this “Combination” weave in several early draft books and photographs of two other coverlets in published sources.<sup>1</sup> In the scheme of things, these combination weaves *are* rather rare, but not unheard of. Here are two rather charming drawings of such weaves that can be found in Mr. Morath’s book.<sup>M</sup> **F5, F6** ■

Let me tell you a little bit more about these combined weaves. The drafts I found in the early books and those on my coverlet fragments had patterns composed of two blocks as well as a Point Twill series. The blocks were either four- or five-end Turned Twill or five-end Turned Satin. The number of harnesses needed always added up to sixteen. I’ve charted this for you to see.

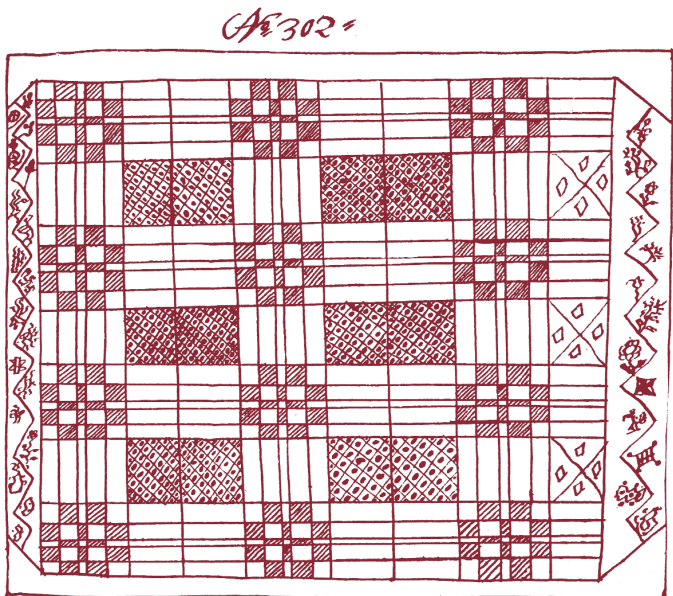


P6

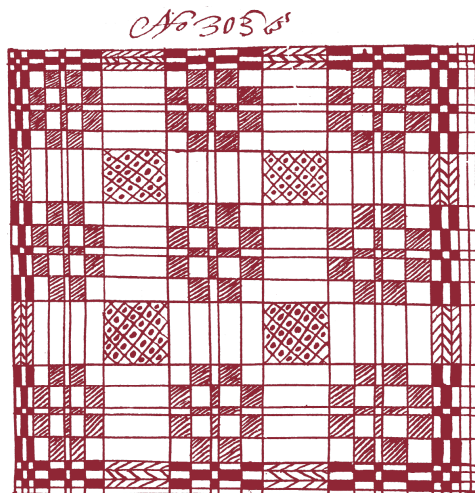


P7

My ID No.	Type of Structure	No. of Harnesses needed for two blocks of Turned Twill or Turned Satin	No. of Harnesses needed for the Point Twill Section	Total Number of Harnesses Needed
ANG 3619	4 end Turned Twill	4 + 4	+8	=16
XANG 3620	4 end Turned Twill	4 + 4	+8	=16
XANG 3621	4 end Turned Twill	4 + 4	+8	=16
XANG 3622	4 end Turned Twill	4 + 4	+8	=16
XANG 3623	4 end Turned Twill	4 + 4	+8	=16
XMOR 771	5 end Turned Twill	5 + 5	+6	=16
XMOR 731	5 end Turned Twill	5 + 5	+6	=16
XKIR 22	5 end Turned Twill	5 + 5	+6	=16
XKIR 23	5 end Turned Twill	5 + 5	+6	=16
XMOR 732	5 end Turned Satin	5 + 5	+6	=16
XFRK 15	5 end Turned Satin	5 + 5	+6	=16
TW 28	5 end Turned Satin	5 + 5	+6	=16
TW 29	4 end Broken Twill	4 + 4	+8	=16



F5



F6